

## ADVANTAGE

**Low installation height**

**Automatic assembly**

**Excellent haptics**

**Perfect lighting**

**High endurance**

**Numerous versions**

## PRODUCT FEATURES

- Recommended for mounting in flat devices, even with integrated LED
- SMD connection technique, reflow lead-free soldering
- Pleasant actuating characteristics due to clearly tangible pressure point and extremely large actuator surface
- Integrated LED provides a central light source
- More than 500,000 switching cycles in 4N version
- Two operating force variants: 4N or N, six LED colors and different brightness groups, other variants available on request

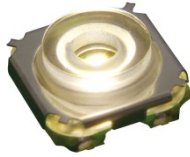
## EXAMPLES OF APPLICATION

- Control panels for automotive applications
- Steering wheel switches
- Small household appliances
- Entertainment electronics
- Office equipment
- Medical devices
- Industrial applications
- Large household appliances

Mechanical life endurance	50E4 (4N version) 20E4 (6N version)
Electrical life endurance	14 V DC 10 mA 50E4 (4N version) 14 V DC 10 mA 20E4 (6N version)
Contact resistance (New condition)	< 100 mOhm
Ambient temperature	-40 °C ... +95 °C (1h to +120°C)
Material terminals	Gold plated
Bounce time	< 5 ms
Rating	Max. 1 W
Voltage range	20 mV – 28 V
Current range	10 µA – 50 mA
Number of poles	Single-pole
Terminal type	PCB terminal
Protection type	
→ Terminal	IP 40
→ Actuator	IP 40



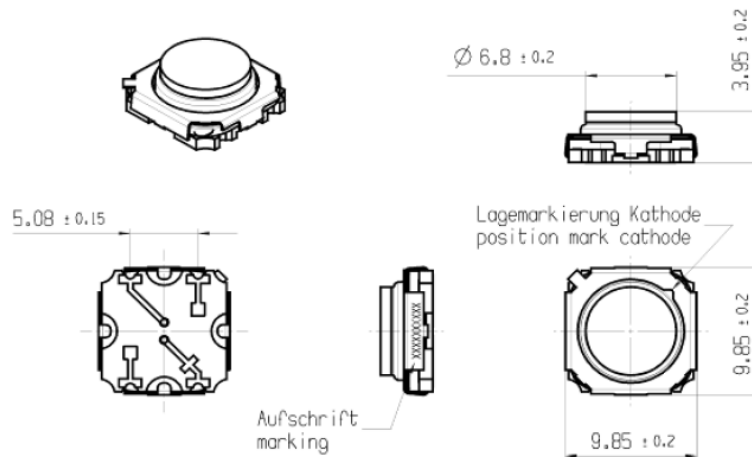
## PRODUCT IMAGE



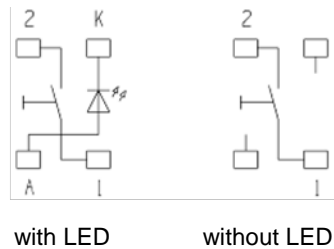
Basic type 3006.2100

## DRAWINGS

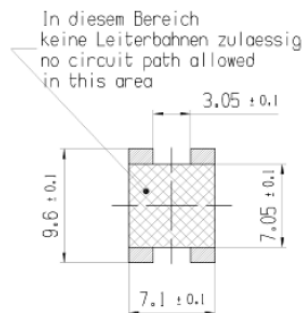
(Dimensions in mm)



## CIRCUIT



## MISCELLANEOUS



Recommended solder pad design

