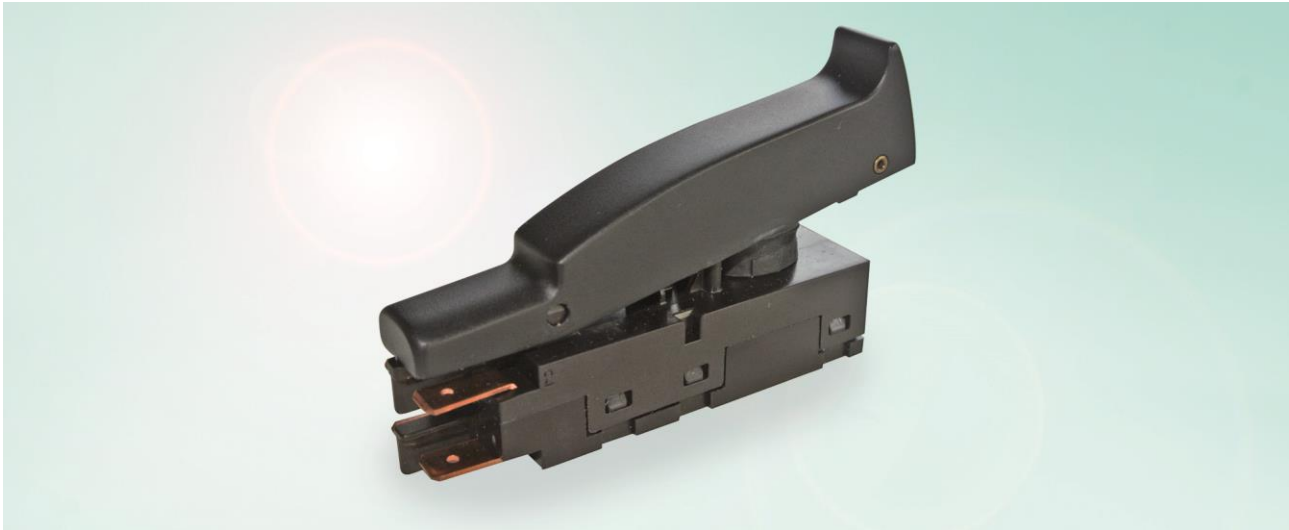




SERIES 2269 – AC / DC HAMMER SWITCH



ADVANTAGE

Extremely slim design

High AC and DC rating

Suitable for harsh environment

Perfect handle ergonomics

Optimized for assembly

Best haptics

PRODUCT FEATURES

- High-power „slim line“ switch, especially designed for large combi hammers and hammer drills with highly ergonomic D-handle designs
- Double pole contact system with 8 silver contacts for safe switching off under high loads
- Highest dust protection for extreme applications under severe conditions
- Slim switch shape enables slim handle designs with a high extent of rubber filling to absorb vibrations
- Mains and motor terminals at rear side of switch for easier wiring in the D-handle application, connector block
- Significant haptics due to strong “click” action

EXAMPLES OF APPLICATIONS

- Hammer drills
- Combi hammers
- Chisel hammers
- Demolition hammers
- Other power tools



Customer specific version

| | |
|--|---|
| Maximum rating | 20 (20) A 127 V AC – 12 (12) A 250 V AC 20 A 127 V DC |
| Inrush peak current (inductive) | 120 A |
| Life endurance → Mechanical → Electrical | > 100.000 cycles > 50.000 cycles (depending on load) |
| Poles | Double-pole, double-gap snapping contact system |
| Contacts | Silver, 8 contacts |
| Mounting | Insertion |
| Dust protection | IP 40 / Bellow-type seal around actuation lever, high overlapping of upper and lower housing (labyrinth system) |
| Terminal type → Line side → Motor side | Plug-on 6.3 x 0.8 mm Suitable for connector block |
| Approval marks (ENEC, UL, CSA) | |
| Suitable for appliances of protection class II | |



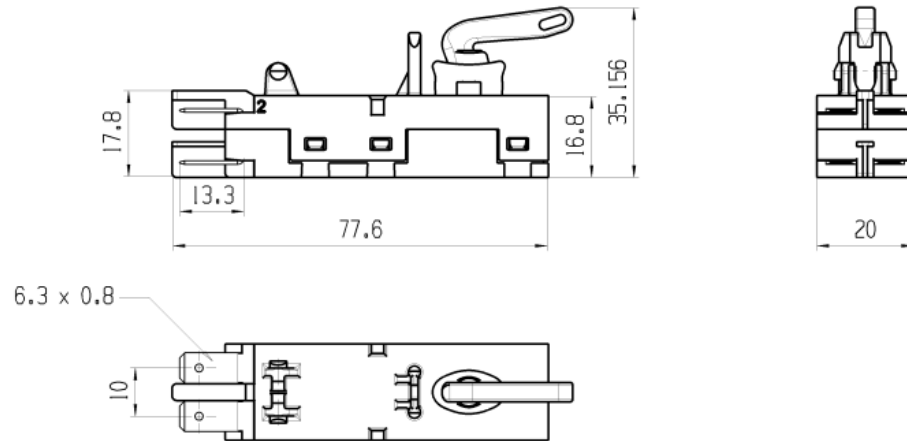
SERIES 2269 – AC / DC HAMMER SWITCH

VARIANTS

| Basic type | Switching function | Terminal type |
|----------------------------|--------------------|----------------------|
| 2269.2101 | Double-pole ON/OFF | Plug-on 6,3 x 0,8 mm |
| Other versions on request. | | |

DRAWINGS

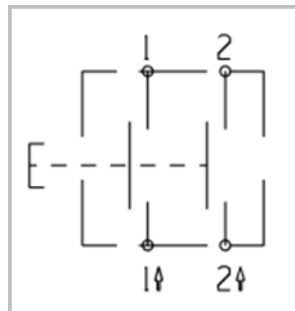
(Dimensions in mm)



Shown without actuator

CIRCUIT

(2269.2101)



MARQUARDT

Marquardt Verwaltungs-GmbH · Ernst Müller-Str. 7 · 8201 Schaffhausen · Switzerland
Phone +41 (52) / 644 30 00 · Fax +41 (52) / 644 30 60 · info@marquardt.ch · www.marquardt.ch