



ADVANTAGE

Medium variability

Approved for drinking water

Compact design

Flexible measuring range

High endurance

High signal accuracy

Simple mounting

PRODUCT FEATURES

- Measured medium air, gas, water, liquid medium
- Materials with direct medium contact are certified according to KTW and WRAS
- Efficient use of materials and therefore excellent price-performance ratio
- Individual adaption of pulse rate for a wide range of application areas
- At least 2,000 m³ (depending on medium)
- Signal accuracy of ±14 % (depending on application)
- Plug-in flange fixable by clips

EXAMPLES OF APPLICATION

- Domestic water circuit
- Heating circuit
- Water treatment
- Household appliances
- Fluid carrying systems
- Cleaning equipment
- Laboratory devices
- Industrial applications
- Catering appliances

| | |
|-------------------------------------|---|
| Measuring range | 1 – 25 l/min |
| Maximum supply voltage | 5 V DC ±10 % or ± 0,5 V |
| Maximum supply current | 7 mA |
| Minimum output voltage | 0 V |
| Maximum output voltage | 5,5 V |
| Minimum output signal (exemplarily) | 97 Hz ± 9 Hz at 12 l/min |
| Maximum output signal | 200 Hz |
| Tolerance | 2-4 l/min ±14 %, 4-15 l/min ±14 % |
| Characteristic pressure drop | < 0.5 bar @12l/min |
| Burst pressure | > 30 bar |
| Maximum static operating pressure | 10 bar |
| Maximum dynamic pressure | 16 bar |
| Life endurance | 60 s water flow (25 l/min.), 5 s stop 30.000 cycles (750 m ³ water) |
| Ambient temperature | +2 – 85 °C |
| Contacts | 3-pole Rast 2,5 |

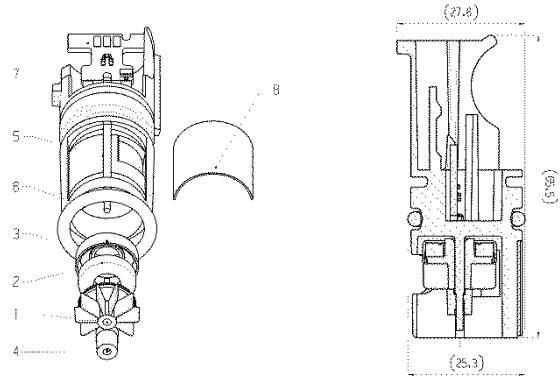
Technical details are exemplarily and are depending on the conditions, connection and the geometry in the application.



SENSOR DESIGN

(Dimensions in mm)

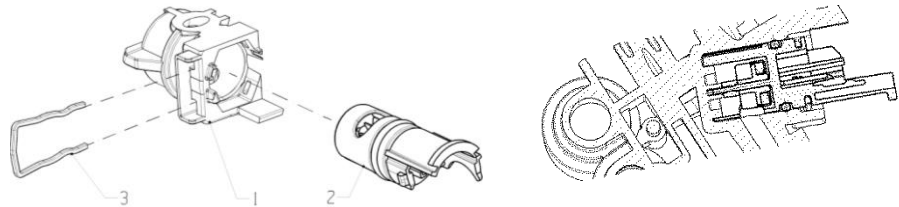
| | |
|---|-----------------------|
| 1 | Impeller |
| 2 | Ring magnet |
| 3 | Magnet retainer |
| 4 | Fixing ring |
| 5 | Sensor housing |
| 6 | O-ring |
| 7 | Printed circuit board |
| 8 | Filter |



INSTALLATION DESCRIPTION

(Exemplarily)

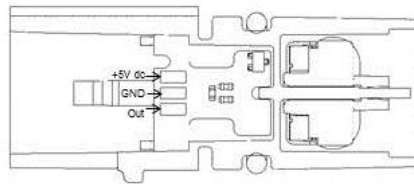
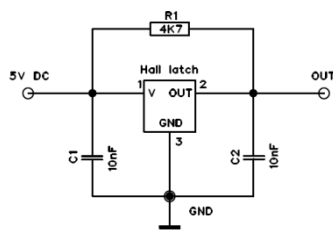
| | |
|---|-------------|
| 1 | Manifold |
| 2 | Flow sensor |
| 3 | Metal clip |



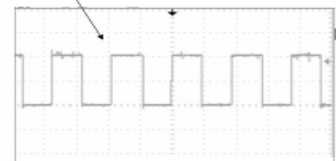
CIRCUIT

PIN OUT

OUTPUT SIGNAL



Output signal



Standard connector 3-pole RAST 2,5 without coding



MARQUARDT