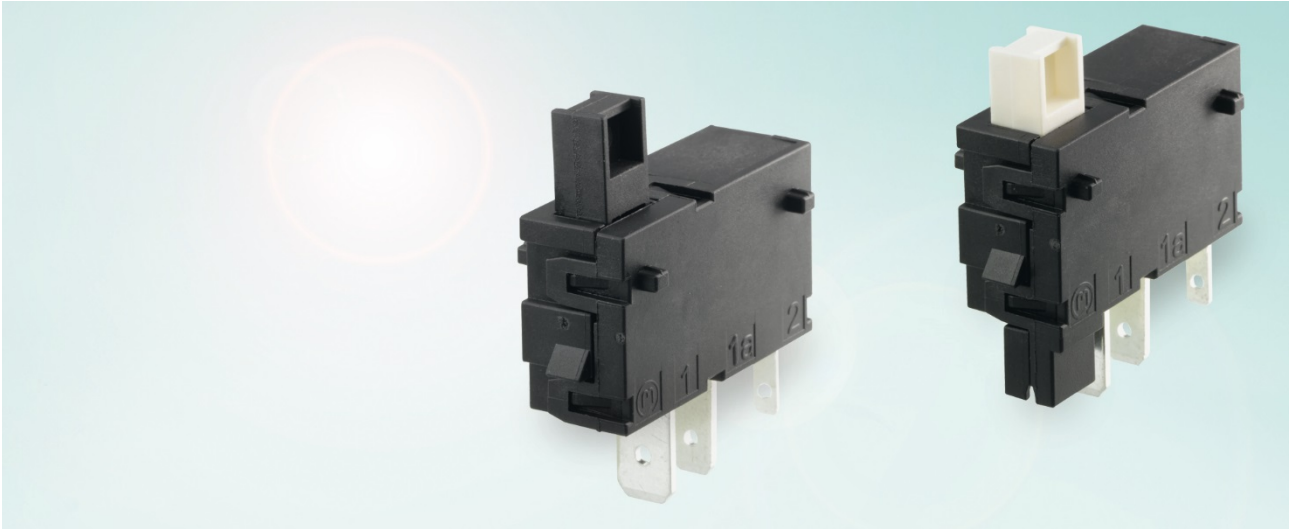




SERIES 1086 – ECO SWITCH

REMOTE-OFF PUSHBUTTON SWITCH



ADVANTAGE

Less standby loss and safer for end customers

Wide rating range

High reliability

Excellent haptics

Easy to integrate into existing systems

Numerous versions

Exceeds the requirements of the European Eco-Design-Regulation

PRODUCT FEATURES

- Automatic switch-off functionality controlled by an external signal from the end device (remote-off)
- From low DC signal currents to ratings of 10 (3) A 250 V AC 1E4 and as 110 V version
- Switching system, tried and tested a million times based on 1080 snap-action switching system
- Optimized and symmetric actuation characteristic
- Compact, one piece solution
- Version with auxiliary contact for a delayed shut-off by the end device; different versions regarding electrical rating, actuators, plug or PCB terminals
- Energy neutral through total single-pole galvanic separation – “Zero-Watt”

EXAMPLES OF APPLICATION

- Small household appliances
- Large household appliances
- Entertainment electronics
- Office equipment
- Medical devices
- Industrial applications

| | |
|--|-----------------------------------|
| Rating | 10 (3) A 250 V AC 1E4 |
| Poles | Single-pole |
| Switching function | ON / OFF (SPST) Remote-off |
| Protection type | IP 40 |
| Mechanical life endurance | 20E4 |
| Ambient temperature | -40 °C ... +85 °C |
| Trigger impulse | 3.38 A 250 V (1 half wave, 10 ms) |
| Contact resistance (New condition) | < 100 mOhm (1 A 12 V DC) |
| Insulation resistance (New resistance) | > 100 MOhm (500 V DC) |
| Proof tracking | 250 PTI |
| Glow wire test temperature | 850 °C |
| Operating force | ≤ 2.5 N |
| Flammability | UL 94 V-0 |
| Approval marks | |



SERIES 1086 – ECO SWITCH

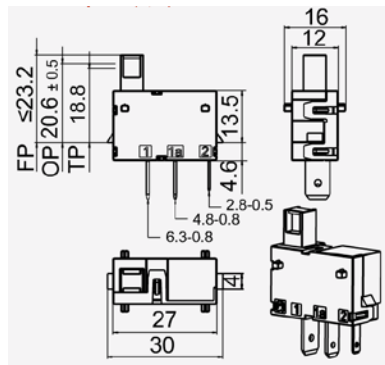
REMOTE-OFF PUSHBUTTON SWITCH

VARIANTS

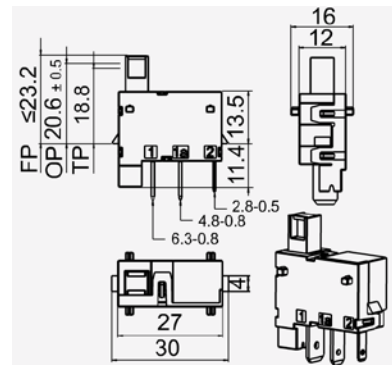
| Part number | Actuation type | Poles | Terminal type | Miscellaneous |
|-------------|----------------|-------|--|--|
| 1086.3101 | Pushbutton | 1 | 6,3 x 0,8 + 4,8 x 0,8 + 2,8 x 0,5 | Remote-off function |
| 1086.3201 | Pushbutton | 1 | 6,3 x 0,8 + 4,8 x 0,8 + 2,8 x 0,5 Connector for auxiliary contact | Remote-off function with auxiliary contactor |
| 1086.3xxx | Pushbutton | 1 | PCB terminal | Remote-off function |

DRAWINGS

(Dimensions in mm)

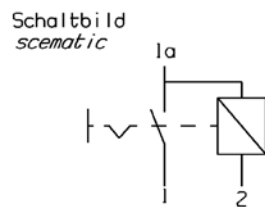


Version 1086.3101

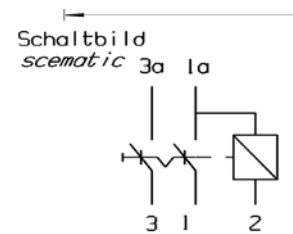


Version with auxiliary contactor 1086.3201

CIRCUIT

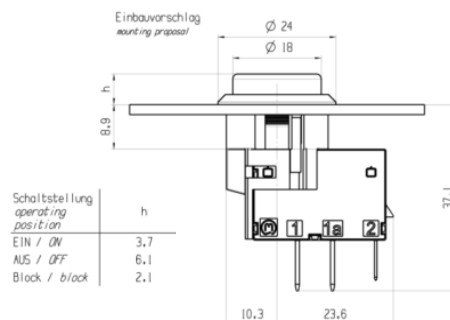


Version 1086.3101



Version with auxiliary contactor 1086.3201

ACCESSORIES



MARQUARDT