



SERIES 1680 – PUSHBUTTON SWITCH

REVERSE PCB MOUNTING



ADVANTAGE

Space optimized

Automatic PCB assembly

High rating

High level of safety and reliability


Numerous versions

PRODUCT FEATURES

- PCB terminals 180° angled for reverse mounting
- Guided PCB terminals with mechanical self-fixation in PCB, delivery in bar magazines
- Up to 8 (8) A 250 V AC
- Double lifting contact system, tried and tested a million times
- Same size single-pole and double-pole versions, different contact types and actuator designs

EXAMPLES OF APPLICATION

- Industrial applications
- HVAC technology
- Entertainment electronics
- Office Equipment
- Medical devices
- Laboratory devices
- Small household appliances
- Cleaning equipment

Rating Europe and America	8 (8) A 250 V AC
Inrush peak current (capacitive)	50 A
Poles	Single- and double-pole
Switching function	ON / OFF (momentary optional)
Protection type	IP 40
Mechanical life endurance	10E4
Ambient temperature	-20 ... +105 °C
Creep resistance (Proof tracking index)	250 PTI
Terminal type	PCB
Actuating force	10 N ± 3 N
Flammability	UL 94 V-0 / GWIT IEC 60335
Approval marks (IEC/UL 61058)	
Suitable for appliances of protection class II	



SERIES 1680 – PUSHBUTTON SWITCH

REVERSE PCB MOUNTING

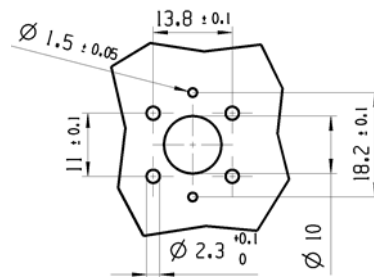
VARIANTS

Type	Poles	Switching function	Terminal type	Optional
1681	1	ON / OFF (SPST)	PCB 180° angled	Actuator design Gold contacts
1681	1	ON/ OFF momentary (SPNO)		
1682	2	ON / OFF (DPST)		
1682	2	ON / OFF momentary (DPNO)		

SWITCHING POSITIONS

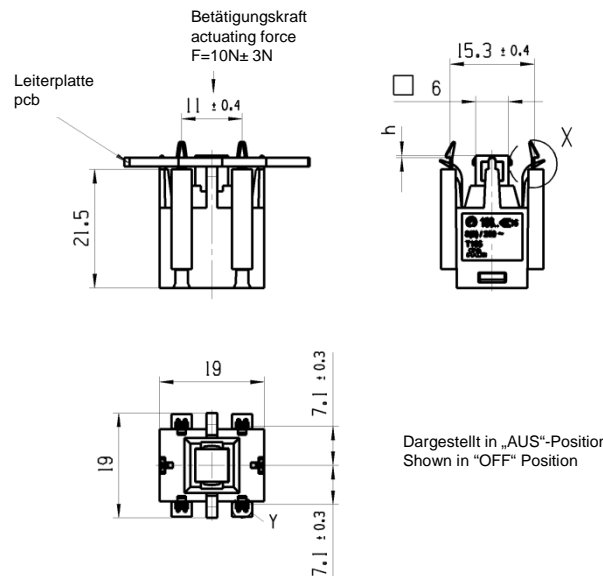
Switching position	h
OFF	0,4
ON	-2,3
Block	-3,9

RECOMMENDED TERMINAL LAYOUT ON PCB



DRAWINGS

(Dimensions in mm)



MARQUARDT